

Somerton, AZ

A city blooms in the desert



Darnell Young, Castle Dome Middle School, Yuma, AZ Earth Camp for Educators 2013



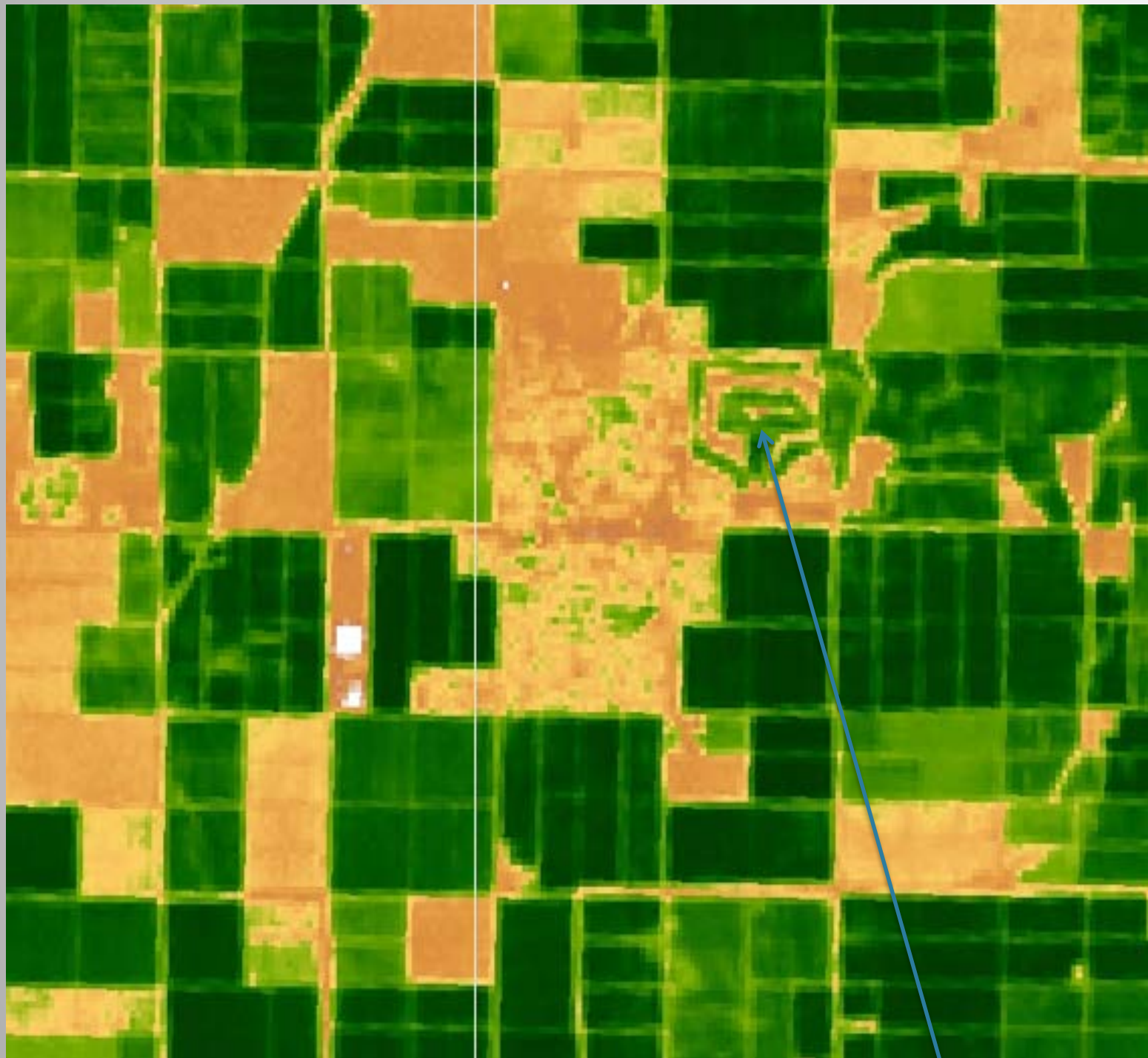
The Power of Perspective

Artist's view of a U.S. Landsat satellite. Credits: NASA

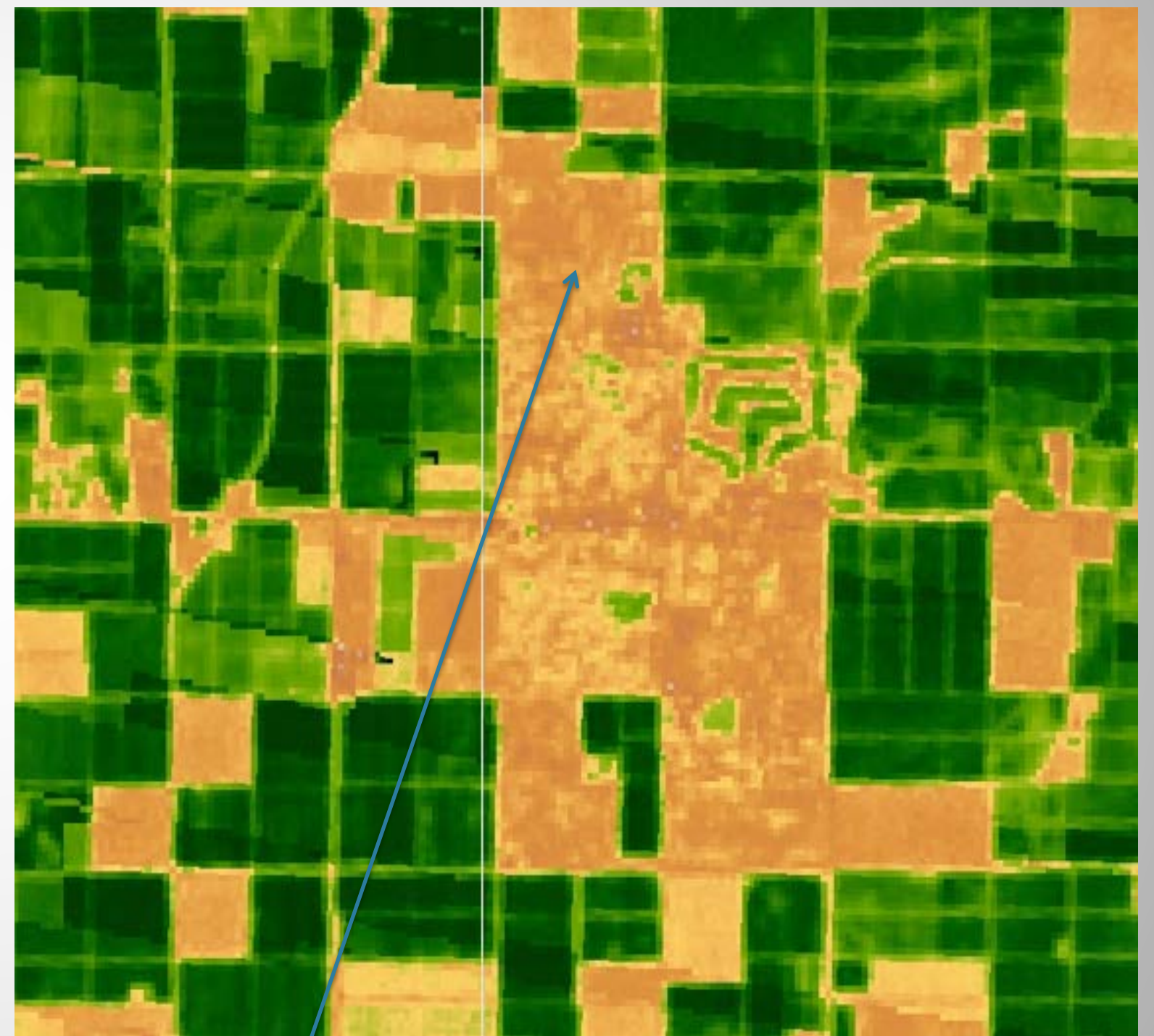
Somerton, AZ is a small town near the border of Mexico and the US. The economy is mostly based on agriculture. Since the year 2000, the population has doubled in size from 7,222 (year 2000) to 14,287 (year 2013). The exponential increase in population began in 1995, just after the North American Free Trade Agreement (NAFTA) was signed.

Population density in the year 2000
5,483 per square mile

Population density in the year 2010
10,828 per square mile



Landsat image of Somerton as it appeared in 2000. The town is surrounded by agriculture (Green indicates vegetation and yellow indicates non-vegetated areas).



Landsat image of Somerton as it appears in 2013. Much of the farmland has been converted to residential.

Landsat NDVI images accessed courtesy of Google Earth Engine's Trusted Tester program.

From 2000 thru 2010

- 3,617 residents are foreign, 49% from Latin America
- 95% of population is Hispanic or Latino of any race.



City of Somerton 2000



City of Somerton 2013

Somerton takes up 1.3 square miles of land (2013).

