

Land use and Growth in Surprise, AZ

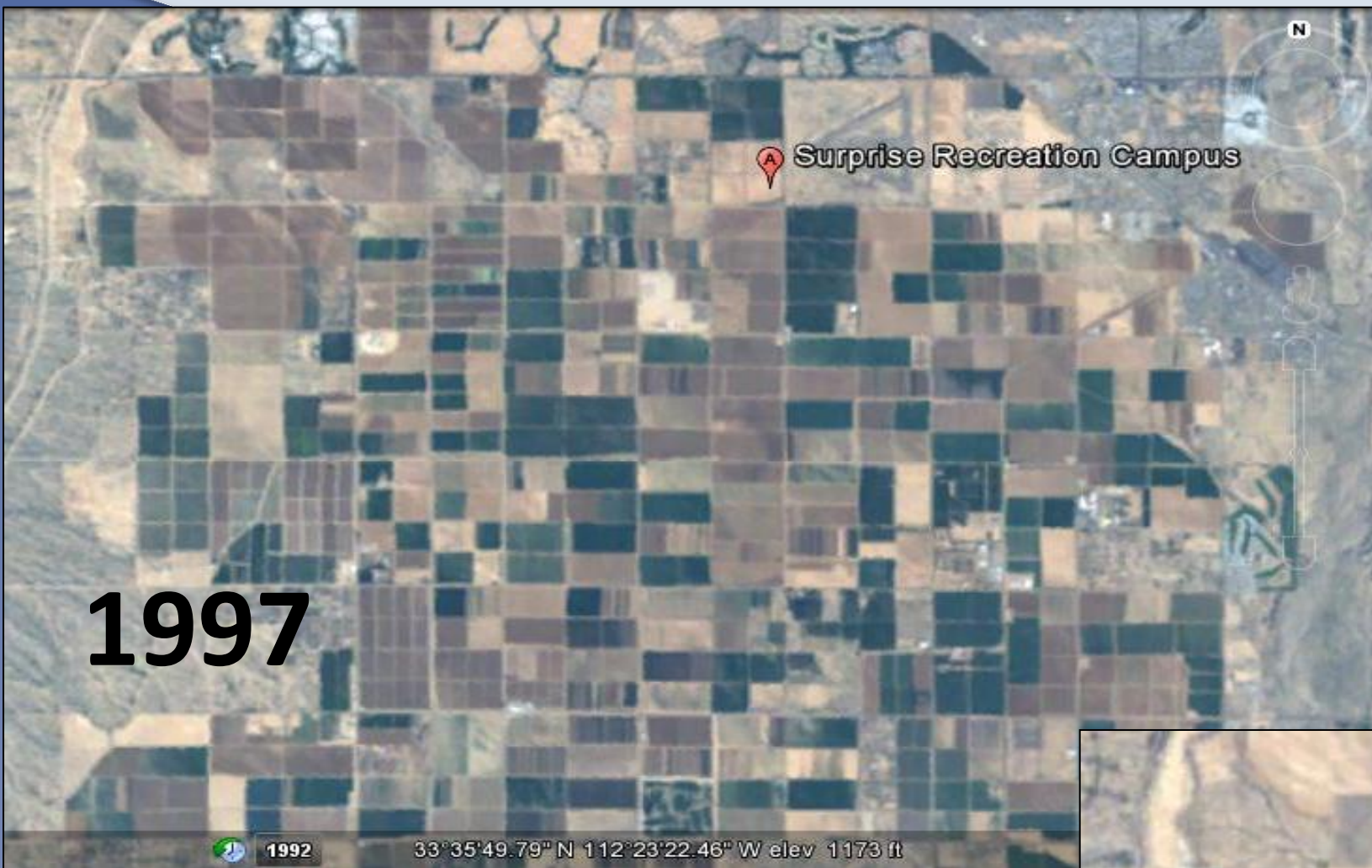
Susan Pendleton, Monterey Park Learning Center, Phoenix AZ
Earth Camp for Educators 2012



The Power of Perspective

Artist's view of a U.S. Landsat satellite. Credits: NASA.

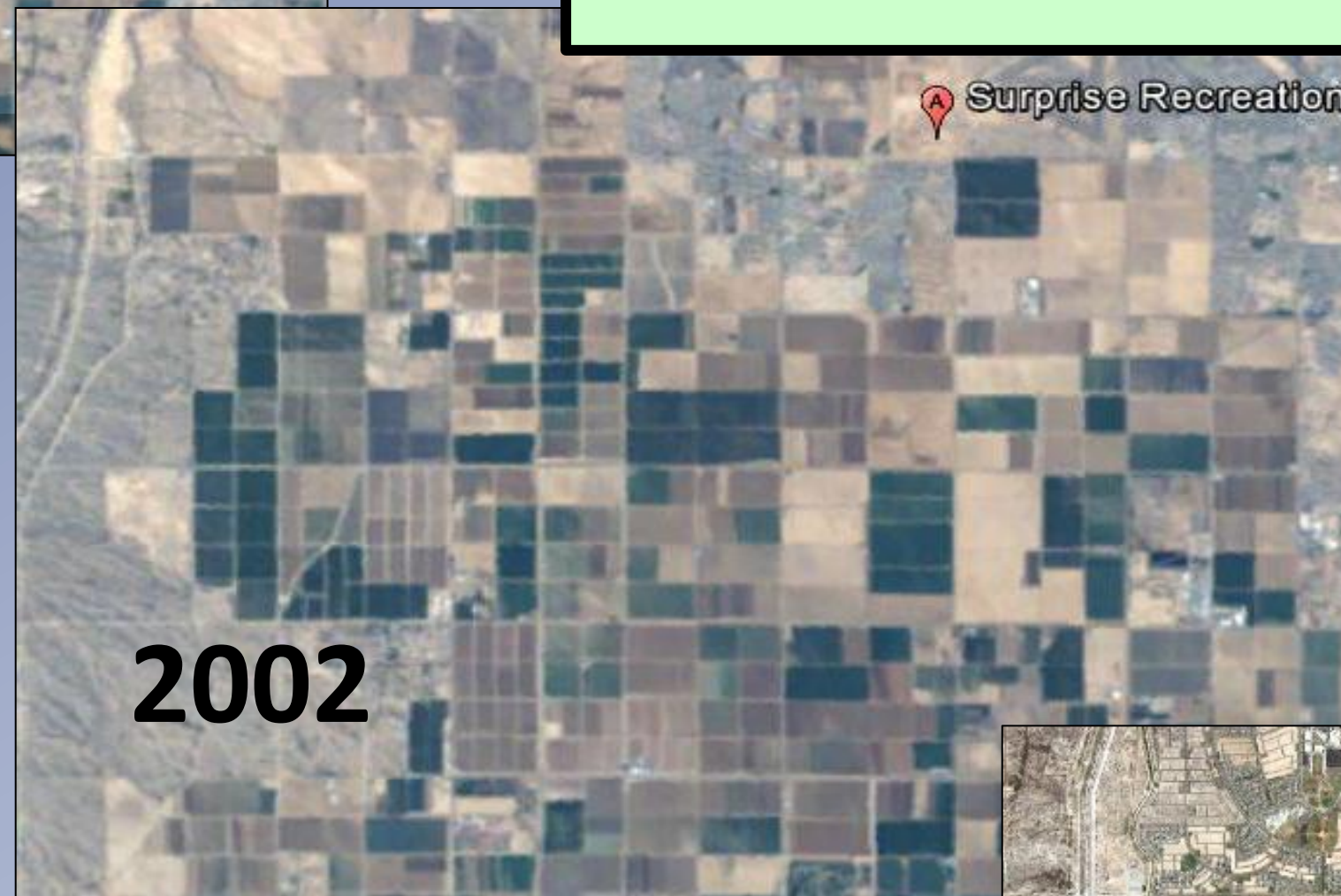
What a surprise when I moved to Surprise in 1998 and my phone company told me it was \$100 extra to set up a phone line in a rural area. Now Surprise is Arizona's 10th largest city.



1997

History
 1938 The city was founded by Flora Mae Statler, who named it Surprise as she "would be surprised if the town ever amounted to much."
 1960 Incorporated into the City of Surprise.
 1990 - 2000 sixth fastest growing city in AZ .
 2002 Built Spring Training home to Kansas City Royals & Texas Rangers baseball teams.
 2007 Approved largest regional mall to be built.

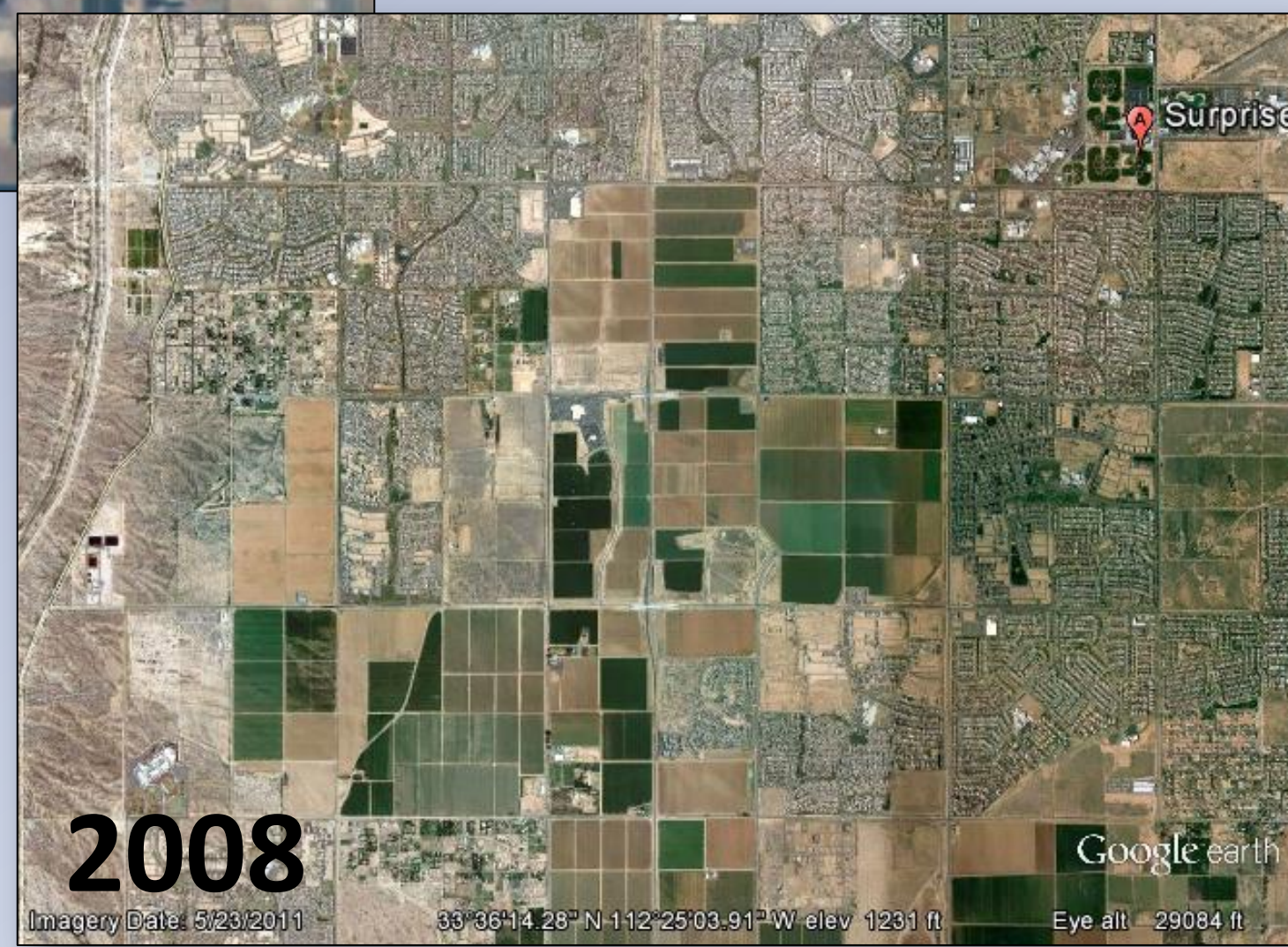
City of Surprise before housing boom. It was agriculturally centered with orange orchards and fields of roses. Population about 20,000.



2002

Housing boom begins but still many farms and fields of roses. Population about 40,000.

Arizona Water Usage 1990-2008
 Total water deliveries increased by 44%, but every agency saw a decrease in per capita use.
http://www.pacinst.org/reports/co_river_municipal_deliveries/crb_riverbasin_press_release.pdf



2008

Housing market peaks and population reaches 93,000. Many farms are gone.



As quoted in an Arizona Republic article in 2011, rose grower, Mr. Woolf, sees Surprise housing developments creeping in around his 1900 acres. **"I'd be happy to sell it because we'd have a huge amount of money"**.

Mr. Woolf feels the rose business is a thing of the past, and if he sells his farm, housing will continue to grow.

<http://www.azcenmoneytral.com/business/articles/2011/06/07/20110607arizona-rose-business-continues-bloom-woolf.html>

"Farm workers clip stalks to be used in grafting from a field of roses at the Woolf Leyton Farms in Waddell."
 According to **Lesley Wright** - Jun. 7, 2011 05:51 PM. Photo: Pat Shannahan/The Arizona Republic

Funding provided by a grant from NASA's Competitive Program for Science Museums and Planetariums

