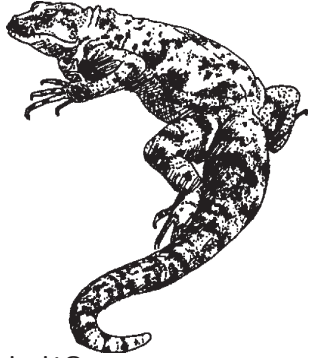


This lizard may be threatened by introduced rats, as well as the pet trade and collection for food.



What is it?

San Esteban Chuckwalla

Replicas of this flying mammal "roost" in the entrance to the geology cave. This mammal suffers from destruction of roost sites and overharvesting of food plants.



What is it?

*California leaf-nosed bat,
Lesser long-nosed bat*

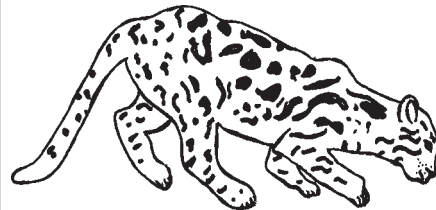
Because these rodents once competed with cattle for food, they were exterminated from Arizona.



What is it?

Black-tailed prairie dog

Its beautiful, spotted coat made this cat too popular with hunters. Much of its best habitat is also in jeopardy.

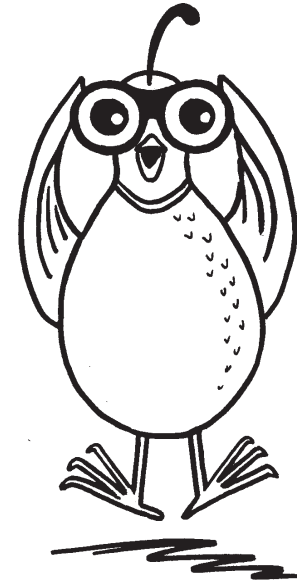


What is it?

Ocelot

ENDANGERED AND THREATENED SPECIES SCAVENGER HUNT

Answer Key

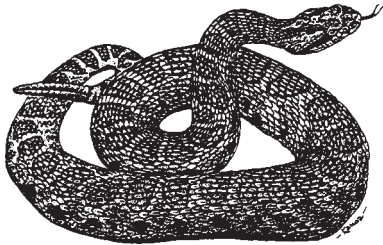


DIRECTIONS:

- 1.) FIND THE SPECIES PICTURED IN YOUR BOOKLET AS YOU GO THROUGH THE MUSEUM
- 2.) READ THE EXHIBIT LABEL TO FIND OUT WHY THE SPECIES IS IN TROUBLE.
- 3.) FILL IN THE NAME OF THE SPECIES IN YOUR BOOKLET.



This is Arizona's only endangered snake. Its numbers are small due to habitat alteration from cattle grazing and agriculture.



What is it?

Massasauga

Another amphibian that has been declining is a type of salamander. This salamander lives only in the San Rafael Valley in Santa Cruz County.



What is it?

Sonoran Tiger Salamander

The aquatic room displays five species of native fish that are facing extinction due to changes in river conditions.



What are they?

Colorado Pikeminnow

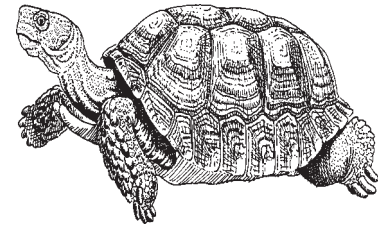
Woundfin

Bonytail chub

Humpback chub

Razorback sucker

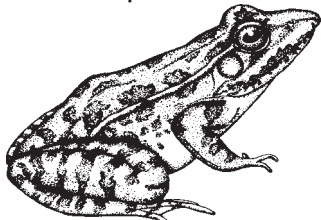
This reptile is threatened by off-road vehicles, highway construction, buffelgrass fires and the pet trade.



What is it?

Desert tortoise

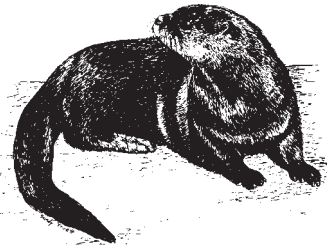
No one knows for sure why amphibian numbers are decreasing but it's probably due to water pollution, acid rain, and ozone depletion. AZ Game and Fish protects the *Rana* species.



What is it?

Tarahumara frog

This mammal once lived in every major river in Arizona, but has declined with the loss of riparian habitat.



What is it?

River otter

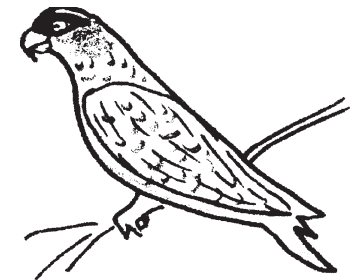
Extirpated by man because of conflicts with livestock, now fewer than 50 remain in the wild. A reintroduction program is occurring in eastern Arizona.



What is it?

Mexican gray wolf

When pine trees are cut down, this bird suffers because it nests in the trees and eats the pine seeds.



What is it?

Thick-billed parrot