

LIFE UNDERGROUND

The Night Snake is a harmless rear fanged snake. During hibernation it will often share the burrow with another reptile. With which other reptile does it share a burrow? ___*Desert tortoise*_____

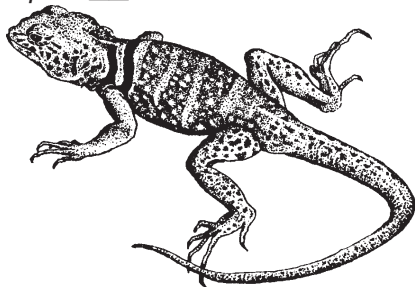
It is called *commensalism*_____ when one animal benefits from this type of arrangement and the other animal is not affected.

LIFE ON THE ROCKS

Which boa is on exhibit here? ___*rosy boa*___
How do they kill their prey? ___*constriction*_____

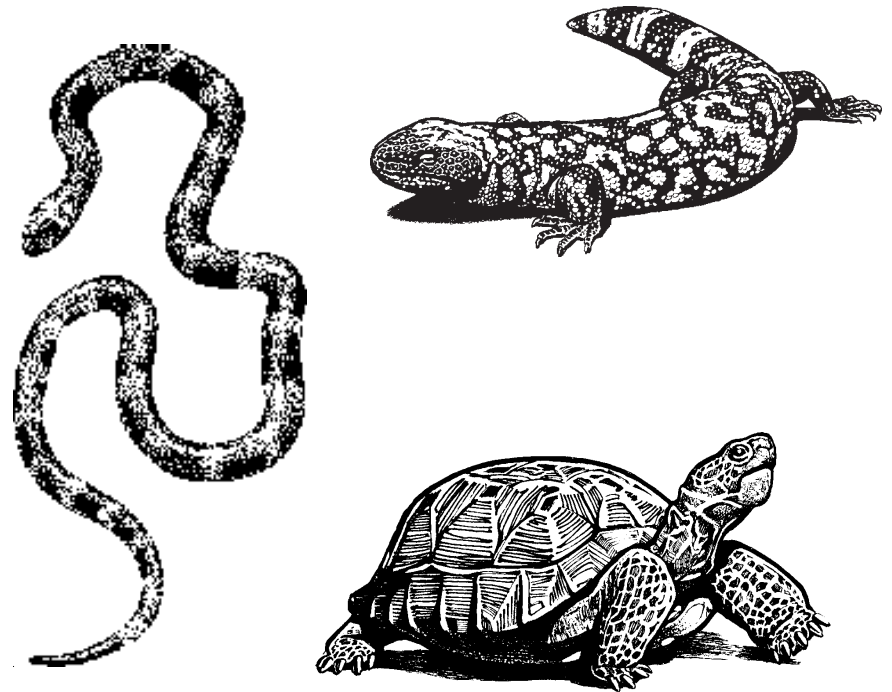
Why do Lyre Snakes squeeze into tight rock crevices? ___*They feel safer in tight spaces*_____

How can you tell a gopher snake from a rattlesnake? ___*A gopher snake's tail always ends in a point, whereas rattlesnakes' tails are blunt and thicker at the tip (even if the rattle is missing). Also, a gopher snake's head and jaws are about the same width as the animal's neck, whereas rattlesnakes' jaws are wider than their necks, and their head is more triangle shaped.*___



Desert Reptiles

Answer Key





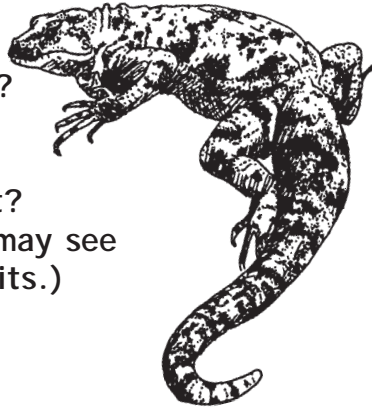
LIZARD ENCLOSURE, FRONT ENTRANCE

Name two lizards that live in this enclosure.

1. *various answers* 2. *see signs and statues*
Remember that it may be too cool outside for lizards to be active. Did you see these lizards? _____

REPTILE AND INVERTEBRATE ROOM

Find the chuckwalla on exhibit.
Which lizard shares its enclosure?
spiny-tailed iguana



Is it found in the Sonoran Desert?
no (But look carefully and you may see them around grounds in the exhibits.)

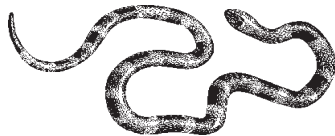
Find a rattlesnake with a name similar to a baseball team.

Western Diamondback Rattlesnake

What color touches red on the bands of the venomous Coral Snake? *yellow*

Name two snakes that have similar colors to the Coral Snake.

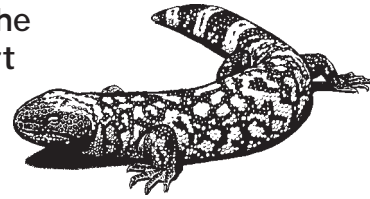
1. *Sinaloan milksnake*
2. *Arizona mountain kingsnake (or banded sand snake, ground snake, Sonoran shovel-nosed snake, and Western shovel-nosed snake.)*



Two of the only venomous lizards in the world are found in the Sonoran Desert region and are on exhibit here.

Name them.

Mexican beaded lizard
Gila monster



DESERT GRASSLANDS

Circle one thing that is special about the box turtle.

- A. It looks like a box.
- B. It has a hinge in its lower shell.
- C. It lives inside a box.

Look for the model of a rattlesnake's rattle. Shake and listen to the real rattle. What is a rattlesnake rattle made of? *keratin*

Can you tell the age of a rattlesnake by counting the segments in the rattle? *no*

Find a Desert Museum Docent and ask, "Why do rattlesnakes have rattles?"

Answer *They use their rattles as a warning so potential predators will leave them alone.*

