

## LIFE UNDERGROUND

The Night Snake is a harmless rear fanged snake. During hibernation it will often share the burrow with another reptile. With which other reptile does it share a burrow? \_\_\_\_\_

It is called \_\_\_\_\_ when one animal benefits from this type of arrangement and the other animal is not affected.

## LIFE ON THE ROCKS

Which boa is on exhibit here? \_\_\_\_\_  
How do they kill their prey?

\_\_\_\_\_

Why do Lyre Snakes squeeze into tight rock crevices?

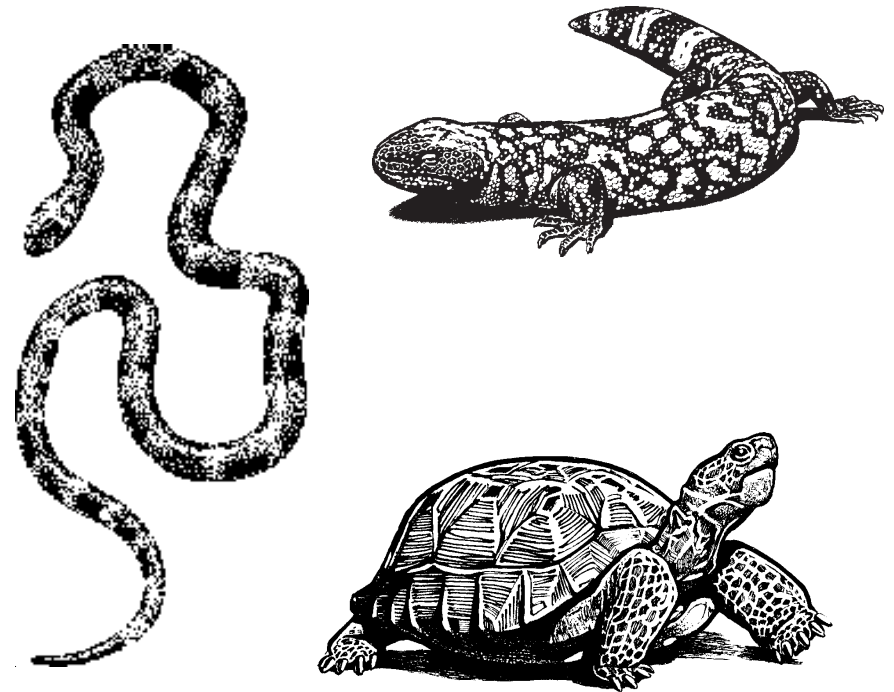
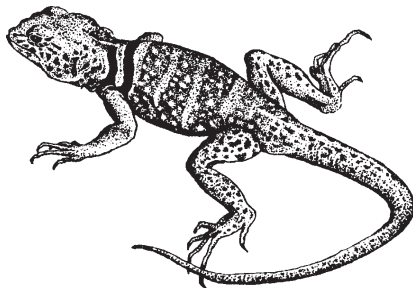
\_\_\_\_\_

How can you tell a gopher snake from a rattlesnake?

\_\_\_\_\_

\_\_\_\_\_

\_\_\_\_\_





## LIZARD ENCLOSURE, FRONT ENTRANCE

Name two lizards that live in this enclosure.

1. \_\_\_\_\_ 2. \_\_\_\_\_

Did you see these lizards? \_\_\_\_\_

## REPTILE AND INVERTEBRATE ROOM

Find the chuckwalla on exhibit.  
Which lizard shares its enclosure?

\_\_\_\_\_

Is it found in the Sonoran Desert?  
\_\_\_\_\_ (But look carefully and you may  
see them around grounds in the exhibits.)

Find a rattlesnake with a name  
similar to a baseball team.

\_\_\_\_\_ Rattlesnake

What color touches red on the bands of the venomous  
Coral Snake? \_\_\_\_\_

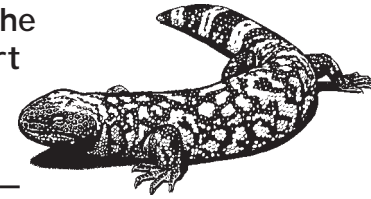
Name two snakes that have similar colors to the Coral  
Snake.

1. \_\_\_\_\_  
2. \_\_\_\_\_



Two of the only venomous lizards in the  
world are found in the Sonoran Desert  
region and are on exhibit here.  
Name them.

\_\_\_\_\_  
\_\_\_\_\_



## DESERT GRASSLANDS

Circle one thing that is special about the box turtle.

- A. It looks like a box.
- B. It has a hinge in its lower shell.
- C. It lives inside a box.

Look for the model of a rattlesnake's rattle. Shake and  
listen to the real rattle. What is a rattlesnake rattle  
made of? \_\_\_\_\_

Can you tell the age of a rattlesnake by counting the  
segments in the rattle? \_\_\_\_\_

Find a Desert Museum Docent and ask, "Why do rattle-  
snakes have rattles?"

Answer \_\_\_\_\_  
\_\_\_\_\_  
\_\_\_\_\_

